



Chris van Uffelen

Fascination Concrete

BRAUN

by Unterlandstättner Architekten

Monolithic Ensemble in Germany

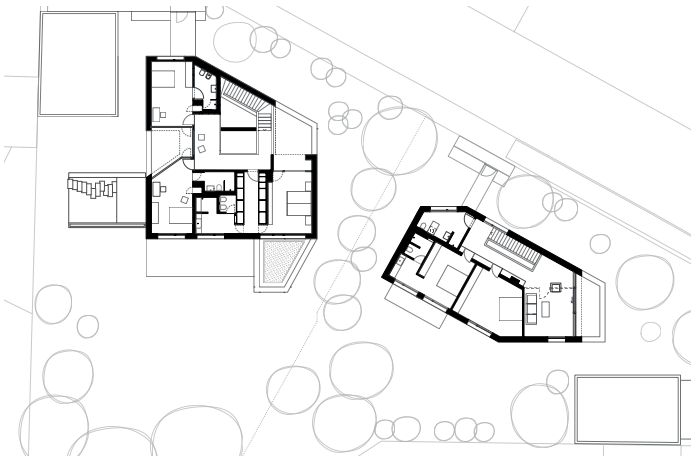


Both houses, the main building and the guest house, were build with infra-lightweight concrete. The non-load-bearing inner walls with their opposing design raise a feeling for the architectural plan and constructional effort invested in the whole process of

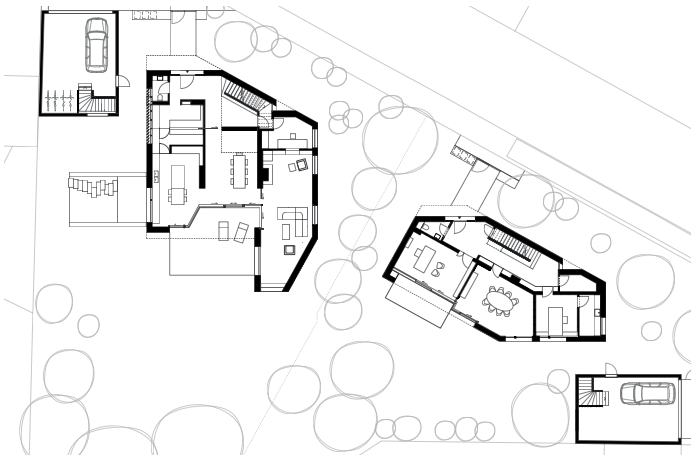
Location: Planegg, Germany
Architect: Unterlandstättner Architekten
Year of Completion: 2018
Type of concrete: infra-lightweight concrete

creating the houses. Smaller in size the guest house opens enough space to display the main building, offering a generous home to the inhabitants.

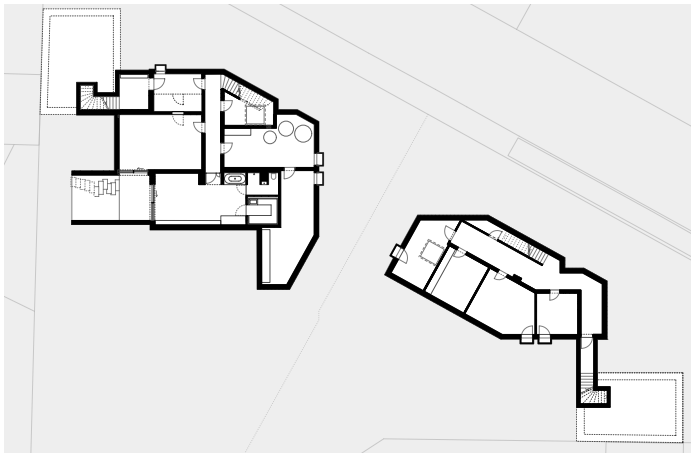
Inspired by the local houses in the small town of Planegg near Munich, both buildings are protected from external insights but offer the residents a beautiful view of the garden area, which also offers plenty of natural daylight.



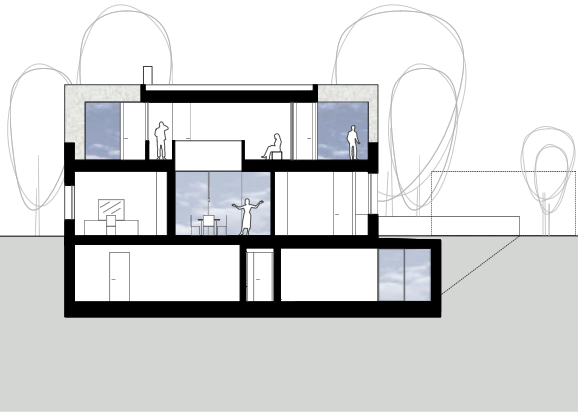
First floor plan



Ground floor plan



Basement floor plan



Cross section



First floor staircase house two



Garden view house one



North-east elevation house one



Dining room house one



Street view house one and two